



A note from the Headteacher....

As we near the mid stage of the summer term it is great that the weather has decided to help us all have more opportunity to be outdoors and enjoy the half term.

We really have packed in so much again this term but the real stars have been Year 6 who took on their SATs with such enthusiasm and ate more fruit and flapjack than I thought was possible!!! Most of them have returned from Yorkshire after a celebratory week away enjoying the north eastern coast and all it has to offer.

The next half term sees more pupils traveling to Germany and two coaches attending the much anticipated Wembley women's FA Cup final. We will also have transition days where Year 8 attend their next high school and Woodfield welcomes the Year 4s ready for September.

Please make sure you check the calendar for such things as the 'Frozen' production, sports day, Year 8 reward trip and the school fayre.

I know the weather will be lovely next week, but please remind your child of the local water areas and how to stay safe around them and in hot weather.

See you all in June #OneWoodfield

Mr N Straw
Headteacher

School Driveway

Parents/Carers are reminded that the school driveway is not to be used for drop-off or collection unless there is a medical reason, or it is an emergency.

Please support us by
following our Social
Media accounts:



Facebook: [/OneWoodfield](https://www.facebook.com/OneWoodfield)

Twitter: [@OneWoodfield](https://twitter.com/OneWoodfield)

Instagram: [OneWoodfield](https://www.instagram.com/OneWoodfield)

Important Dates:

Jun 2026

- 1st – Return to school
- 4th – Year 8 HPV vaccinations
- 8th to 12th – KS3 Trip to Germany
- 9th – Redditch Gotta Sing @ Palace Theatre
- 15th to 17th – KS3 Trip to London
- 15th & 16th – School Production 'Frozen' @ 6:30pm
- 22nd – Additional Inset Day
- 30th – Year 8 Trip to Drayton Manor

Jul 2026

- 2nd – Sports Day
- 2nd – Trinity Pyramid Concert
- 7th – Nurture Trip to Sanders Park
- 8th & 9th – Transition Days
- 15th – Summer Fair from 2:00pm
- 17th – Last day of term

Breakfast Club

Our Breakfast Club runs from 8:00am – 8:30am every morning and is an opportunity for your child to have a hot drink and breakfast in a warm, safe environment with a member of staff always present. There are games and activities available; your child can receive help or advice with homework or simply spend the time with friends before lessons begin.

Our Breakfast Club is FREE of charge to all pupils. If you are interested in your child joining our Breakfast Club, please contact the office.

Reporting Pupil Absence

Parents/carers please ensure you report pupil absence before 8:10am by either:

- Send an email to attendance@woodfield.bmat.co.uk
- 'Report an Absence' on MCAS
- Phone the school office on 01527 527081 and press option 1

Please note we no longer use StudyBugs



Communication Policy

Due to commitments on their time, staff are not always available to see you in person, take your call or respond to your email immediately.

With the exception of safeguarding concerns*, we aim to respond to calls and emails within 2 school days.

Any safeguarding concerns will be dealt with as a priority

Please note that our office hours are 8.00am-4.30pm so please do not expect to get a response outside of these times. Calls/emails marked 'urgent' will be prioritised.

A reminder of our communication routes is on the last page. Messages can also be sent to the office/teachers via MCAS.



Children's Mental Health

We are delighted to share with you a new NHS funded service designed to support young people aged 7-12 who are experiencing worries or anxieties; **Lumi Nova**. With the end of the school year approaching, we wanted to remind you to take advantage of our offer as your child/ren transition into the summer and new academic year.

What is Lumi Nova?

Lumi Nova is an intergalactic adventure game to support young people to fight fears and manage worries. Whilst exploring planets, customising characters and earning treasure your child breaks their fears and worries down into manageable steps, learning life-long skills and building resilience. Watch this short animated video to learn more: [Lumi Nova Introduction Video](#)

Who can use Lumi Nova?

Lumi Nova was created for 7 - 12 year olds (school years 3 - 7) who are having difficulties with fears, worries, or anxiety related to social situations, separation or phobias.

Lumi Nova can help your child to face their worries by breaking them down into small manageable challenges and can support your child with:

- ★ Returning to school or starting a new school
- ★ Making new friends and going to social events
- ★ Speaking in front of a group
- ★ And lots more!

How do you access Lumi Nova?

Accessing Lumi Nova is quick and easy. Use the link below to register and you will receive a text message to guide you through getting started.

[Luminova.app/handw](https://luminova.app/handw)

To find out more visit luminova.app or join a [Parent Information Webinar](#).



Pupil Premium @ Woodfield

The Pupil Premium is extra government funding which is paid to support children in reaching their full potential

Am I eligible for Pupil Premium?

Qualifying benefits are as follows:

- ⇒ Universal Credit, and your annual household income is £7,400 per annum (£616 per month) or less after tax, and not including any benefits
- ⇒ Income Support
- ⇒ Income-based Jobseekers Allowance
- ⇒ Support under part 6 of the Immigration and Asylum Act, 1999
- ⇒ Child Tax Credit, provided you are not also entitled to Working Tax Credit and your annual income is less than £16,190, as assessed by HMRC
- ⇒ Guaranteed Pension Credit
- ⇒ Income-based Employment and Support Allowance
- ⇒ Working Tax Credit run-on paid for 4 weeks after you stop qualifying for Working Tax Credit

If your child is eligible for Pupil Premium, the school receives additional funding to enable us to enhance our support.

We can support you with:

- Uniform costs
- Up to 50% subsidised costs towards school trips and residentials
- Targeted support for early readers, pupils in their SATs year and SEMH needs
- Musical instrument lessons
- A place at our Forest School
- A place at Breakfast Club

To apply, either complete a form available from Reception, or submit an online application via the WCC Citizen Portal:

https://ems.worcestershire.gov.uk/CitizenPortal_LIVE/en





Togetherness

Worcestershire families: Build everyday emotional resilience!

Your free online learning. Big feelings, how the brain works, and relationship ideas for happier lives.

Worcestershire County Council gives families free access to Togetherness resources to support wellbeing. For parents, carers, grandparents, and young people.

Learn from NHS clinical psychologists, practitioners, and other parents. The pathways will help you and your family understand and manage emotions in everyday life.

<https://togetherness.co.uk/mul/worcestershire/>

Year 5

Year 5 have had a fantastic half term and should be incredibly proud of all they have achieved. Their enthusiasm for learning, positive attitudes, and determination to do their very best have truly shone through in everything they have done. It has also been wonderful to see their creativity and teamwork, particularly during our celebrations of what was Sir David Attenborough's 100th birthday—thank you to everyone who contributed and helped make this such a memorable and inspiring occasion. As we come to the end of a busy and successful half term, I hope all of our Year 5 pupils and their families enjoy a well-deserved, restful break. We look forward to welcoming everyone back refreshed and ready for another exciting term ahead.

Miss Grimsley

Year 8

Our KS3 students took part in the district indoor rowing competition, showcasing great determination and teamwork throughout. Both Year 7 and Year 8 represented the academy exceptionally well, demonstrating impressive effort, skill and a fantastic attitude.

In Year 8, the girls' team—Daisy P, Maria S, Savya S and Kylie C—put in a strong performance, finishing with a commendable 7th overall. A special mention goes to Savya S, who achieved an excellent individual result, placing 12th out of 32 competitors in her race. The Year 8 boys' team—Antoni O, Carter H, Layton-James H and Charlie A—delivered a good performance. They finished 5th overall showing excellent effort and commitment throughout. The top performer for the team was Antoni O, who rowed an outstanding individual distance of 811 metres. This placed him 4th out of 32 competitors in the individual event, narrowly missing out on a medal.

We are incredibly proud of all students involved for their commitment and achievements.

As a year group, Year 8 have a lot to be proud of. Their time at Woodfield is ending. Whilst this is typically a nerve-wracking time, students are handling this next step in their education with maturity. With just 7 weeks of Woodfield life ahead of them, there is still so much more for them to embrace. Year 8 have trips to Germany and London to look forward to. They also have their end of year trip to Drayton Manor and the leavers Prom. We have sports day and transition days, leavers assemblies and celebrations. With just 7 weeks left to go, I can't wait to see how Year 8 handle more of these changes and challenges. I also can't wait to celebrate with them as they prepare for this exciting new phase in their lives.

Mr Brook





Year 6 Competition Results: Stephen Wiltshire research project

Our talented Year 6 pupils have been studying the architectural drawings of autistic artist Stephen Wiltshire.

They created illustrations of some of his favourite landmarks from Paris, London and New York. These were then placed inside creative frames made by the pupils and inspired by keyholes, windows and Wiltshire's silhouette. Pupils tried to capture Wiltshire's ability to draw from memory and celebrate his artistic ability.

They were then challenged to add research and ideas in a creative way to the remaining interior piece of their frame.

Here are just a few examples of some of their creations.



Ariana Uddin 6NP



Ollie Popiela 6RM



Nathan Regenda 6VP



Year 8

Whole year group attendance – 93%

Top 20 positive earners

1. Amina - 361
2. Eshan - 338
3. Felicity - 336
4. Savya - 334
5. Zara - 328
6. Ava - 325
7. Dion - 324
8. Asifa - 324
9. Ashleigh - 322
10. Artur - 321
11. Tanaka - 320
12. Isabelle - 319
13. Ezekiel - 318
14. George - 317
15. Edel - 309
16. Oscar - 309
17. Philip - 307
18. Sofia - 305
19. Rayyan - 304
20. Piotr – 303

0 demerit students

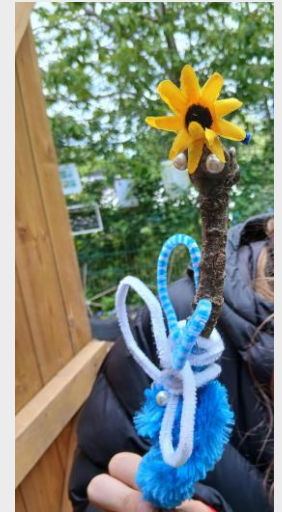
Kyae	Samuel
Chloe	Lexi
Asifa	Savya
Riley	Adeen
Mia	Eshan
Maggie	Dion
George	Edel
Amina	Ruby-Lee
Felicity	Rayyan
Artur	Jasmine
Ava	

Forest School

Forest school has burst into spring, pupils have been busy building storm shelters from scratch and thoroughly enjoyed the challenge. Fairies have also been made to add to our fairy garden which helped build motor skills and dexterity.

Pupils have also had a go at making oobleck which they all found fascinating and enjoyed discovering its different textures. Two year 6 pupils created a birds nest from natural materials, our resident robins were very happy with the results.

The last week of the term we made smores, which required pupils to build the fire and light it and have resilience in both of the skills.





Year 7

Last week, our KS3 students took part in the district indoor rowing competition, showcasing great determination and teamwork throughout. Both Year 7 and Year 8 represented the academy exceptionally well, demonstrating impressive effort, skill and a fantastic attitude.

In Year 7, the girls' team—Macie J-WR, Betsie S, Layla K and Emily H—put in a strong performance, finishing an impressive 6th overall. A special mention goes to Layla K, who achieved an excellent individual result, placing 6th out of 28 competitors in her race.

The Year 7 boys' team—Kyrese L, Felix Z, Andrei N and Blaine SP—delivered an outstanding performance, winning the overall team competition and securing gold medals. Their success was further reflected in the individual events, where Blaine SP took 1st place and Felix Z achieved 2nd place, both competing against a field of 28 rowers.

We are incredibly proud of all students involved for their commitment and achievements.

Looking ahead, we have the London and Germany residential trips taking place in the coming weeks. We hope all Year 7 students involved have a wonderful time and fully enjoy the exciting life experiences these trips will offer. If you still require any further information, please do not hesitate to contact the school office.

Mr Hale

Year Group Attendance since start of year (without PA/leavers) - 93.1%

Top 20 positive earners from the start of the year:

Behaviour Dashboard			
Place	First Name	Tutor	Points
1	Alfie	7HM	367
2	Elijah	7HM	354
3	Amirullah	7AY	334
4	Lucas	7AY	280
5	Ronnie	7AY	276
6	Aaron	7IS	272
7	Callum	7HM	270
8	Mustafa	7IS	254
9	Ava	7CP	254
10	Ryan	7IS	244
11	Anniya	7CP	242
12	Victoria	7IS	240
13	Alana	7JB	228
14	Sobhan	7HM	219
15	Macie-J	7CP	217
16	Summer	7HM	216
17	Riley	7HM	216
18	Maryam	7CP	215
19	Sreya	7CP	215
20	Jasmine	7HM	214



Monday 15th & Tuesday 16th June 6pm
Tickets available via MCAS

Wild school holiday fun

Don't get bored in the school holidays - try our fun nature activities instead!

Make a nectar bar

No matter how big or small your space, there's a lot you can do to help our insects!

- You'll need a window box (or two if you've got space) with drainage holes.
- Use peat free compost in your window box.
- Stock up on pollinator-friendly plants that are suitable for window boxes. Choose from lavender, thyme, sage, agrimony and rosemary.
- Water regularly throughout the summer!

Make a butterfly painting

You will need water-based paints, brushes, sugar paper, marker pen and plenty of newspaper to cover your table.

- Fold a piece of sugar paper in half (as if making a card) and open it back out.
- Paint the shape of butterfly wings on one half. Fold the paper over again and press down.
- Open out the paper and add more colours to one side. Refold and press.
- When the butterfly wings are dry, add a body and antennae with a marker pen.

How to build a mini wildlife pond

You will need:

- a waterbutt
- old bricks, rocks and pebbles
- pond plants
- spade

It is best to dig this pond in a slightly shaded area and to water it regularly. You can also add a small amount of fish food to the water.

- Dig a hole. Your pond will need to be at least 10cm deep. The size of your pond will depend on the space you have.
- Use your waterbutt to fill the hole with water. Add a small amount of fish food to the water.
- Add a layer of gravel and rocks. This will help to filter the water and keep it clean.
- Use your pond to grow plants. You can use pond plants or plants that you have collected from the garden.
- Start watering - you only need to water once a week.
- Now watch and wait! Wildlife will come to your pond to drink and eat.

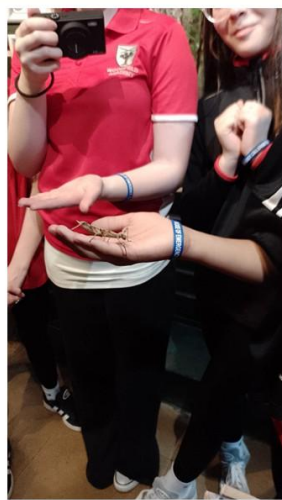
www.wildlife-worcs.co.uk Don't wash your hands. Fill or use water from wildlife ponds to fill your garden ponds.



Year 8 Summer Term Visit to Stratford Upon Avon

- The Science, Art and English departments ran another successful trip to Stratford-Upon Avon on Monday 27th April for our Year Eight students.

It was a great day and demonstrated the connections between core and foundation subjects. Students were given the opportunity to handle mini beasts at the Butterfly farm, write with a quill and experience an immersive lesson at Shakespeare's School Room and view interactive installations and sculptures at the Mad museum. It was a beautiful day and we felt like we were on our summer holidays. Plenty of souvenirs and ice creams were enjoyed!





Home/School Family Support

Justine and Mrs Ginns (EWO) hold weekly drop-in sessions 8.30am - 10.30am every Thursday. Parents will need to book by emailing or texting Justine directly.

This is for any worries or concerns around attendance, mental wellbeing or issues at home.



School Contact Details

Batchley First School
01527 62926

Woodfield Academy
01527 527081

Birchensale middle
01527 68430

Mobile:
07809330825

Email:
jfitzer@batchley.worcs.sch.uk

Home/School Family Support



JUSTINE FITZLER



Who is your Home/School Family Support Worker?

My name is Justine Fitzler



I have worked in the area for over eighteen years.

I know the journey of being a parent can take its twists and turns, and sometimes, we all need a little help along the way, that's what I am here for. If I can't help you, I know somebody who can.

I can be contacted through my Schools or alternatively you can contact me directly on:

Mobile:
07809330825

Email:
jfitzer@batchley.worcs.sch.uk

If I am unavailable, please leave a message and I will get back to you as soon as possible.

What does a Home/School Family Support Worker do?

My role is to work closely with children and families who may be experiencing difficulties.

I listen and appreciate parents/carers issues and offer suggestions and advice for individuals and families

I can work with and support families during key school transitions including newcomers and moving to middle school.

I work with families who are going through difficult times including relationship breakdown, bereavement and mental health issues.

In consultation with parents/carers I can support children on a 1:1 basis (in school or in their home) or in a group, listening and working with them in different ways on managing their emotions, developing social skills and building their confidence

What does a Home/School Family Support Worker do?

- Bereavement, grief and loss
- Transition to new school
- Change in family circumstance
- Attendance
- Friendships
- Behavior
- Parenting
- Self-esteem
- Confidence
- Mental health
- Relationship breakdown
- Anxiety
- Trauma

This list is not exhaustive and there may be other reasons that a family might need support.

Sometimes you just might want someone to talk to outside of the family.



SCHOOL TERM AND HOLIDAY DATES FOR ACADEMIC YEAR 2026/27

School day starts: 8:45am School day finishes: 3:15pm		TEACHER EDUCATION DAYS *MAY BE SUBJECT TO CHANGE*
	AUTUMN TERM 2026	
TERM STARTS		1. Tuesday 1 st September 2. Wednesday 2 nd September
School re-opens for pupils	Thursday 3 rd September	
HALF TERM	Monday 26 th October – Friday 30 th October	
		3. Monday 2 nd November
School re-opens for pupils	Tuesday 3 rd November	
Term ends for pupils	Thursday 17 th December	
TERM ENDS		4. Friday 18 th December *
	SPRING TERM 2027	
TERM STARTS		5. Monday 4 th January
School re-opens for pupils	Tuesday 5 th January	
HALF TERM	Monday 15 th February – Friday 19 th February	
		6. Monday 22 nd February
School re-opens for pupils	Tuesday 23 rd February	
Term ends for pupils	Wednesday 24 th March	
TERM ENDS		7. Thursday 25 th March
	SUMMER TERM 2027	
TERM STARTS	Monday 12 th April	
HALF TERM	Monday 31 st May – Friday 4 th June	
TERM ENDS	Wednesday 21 st July	

Christmas Day	Friday 25th December 2026
Boxing Day	Monday 28th December 2026
Good Friday	Friday 26th March 2027
Easter	Monday 29th March 2027
May Day	Monday 3rd May 2027
Whitsun Bank Holiday	Monday 31st May 2027
August Bank Holiday	Monday 30th August 2027



Attendance Matters



Whilst we all know that it is inevitable that children will have periods of illness during their time at school, it is essential that we look at ways to minimise this and the impact it has on achievement.

Regular and punctual school attendance is essential – only pupils who attend school regularly can take full advantage of the educational opportunities available to them.

If your child is suffering from a minor ailment such as a cold or a cough, please consider sending them to school. We will always send them home if we feel they are too unwell to be here.

[NHS Live-well - Is my child too ill for school?](#)

If your child is worried or anxious and not wanting to attend, please contact school via attendance@woodfield.bmat.co.uk so that Mr Hanks can assist and support.

A **Request for Absence During Term Time** application form must be completed **PRIOR** to any holiday. Forms are available from Reception.

What does your child's attendance % mean?

Yearly Attendance %	Total of days missed in a school year	Number of lessons missed in 1 school year	Number of lessons missed in 4 school years
100%	0	0	0
97%	6	30	120
95%	10	50	200
90%	20	100	400
80%	40	200	800
50%	100	500	2000

Good punctuality at school is just as essential for pupils to achieve their full potential as attendance. Being on time for school every day is an important step in forming good habits for later life. The impact of lateness soon adds up over a school year...





TERM DATES: ACADEMIC YEAR 2025/26

Autumn Term 2025

TERM STARTS Monday 1st September 2025
TED Monday 1st September 2025
TED Tuesday 2nd September 2025

BACK TO SCHOOL Wednesday 3rd September 2025

TED Friday 10th October 2025

HALF TERM Monday 27th October 2025 – Friday 31st October 2025

BACK TO SCHOOL Monday 3rd November 2025

TERM ENDS Friday 19th December 2025

Spring Term 2026

TERM STARTS Monday 5th January 2026
TED Monday 5th January 2026

BACK TO SCHOOL Tuesday 6th January 2026

HALF TERM Monday 16th February 2026 – Friday 20th February 2026

BACK TO SCHOOL Monday 23rd February 2026

TERM ENDS Friday 27th March 2026

Summer Term 2026

TERM STARTS / BACK TO SCHOOL Monday 13th April 2026

HALF TERM Monday 25th May 2026 – Friday 29th May 2026

BACK TO SCHOOL Monday 1st June 2026

TERM ENDS FOR PUPILS Friday 17th July 2026

TERM ENDS **TED Monday 20th July 2026**

Other Dates

GOOD FRIDAY Friday 3rd April 2026
 EASTER MONDAY Monday 6th April 2026
 MAY DAY Monday 4th May 2026
 WHITSUN BANK HOLIDAY Monday 25th May 2026



Communication & Apps

Telephone: 01527 527081

Website: www.woodfield.worcs.sch.uk

Main School Email: office@woodfield.bmat.co.uk

Attendance: attendance@woodfield.bmat.co.uk

Behaviour Issues: behaviour@woodfield.bmat.co.uk

Anti-Bullying: bullying@woodfield.bmat.co.uk

Teaching & Learning: teachingandlearning@woodfield.bmat.co.uk

SEND: send@woodfield.bmat.co.uk

Book A Tour: tour@woodfield.bmat.co.uk

Mental Health: iamworried@woodfield.bmat.co.uk

Safeguarding: safeguarding@woodfield.bmat.co.uk

Head of Year 5 2025-26	Mrs P Grimsley
Head of Year 6 2025-26	Mrs N Philpott
Head of Year 7 2025-26	Mr M Hale
Head of Year 8 2025-26	Mr T Brook

Essential Equipment

All pupils should have the basic essential equipment with them every day. This includes:

- | | |
|-------------------------|--------------|
| Academy Planner | Reading book |
| Blue handwriting pen | Pencil |
| Coloured pencils | Eraser |
| Ruler | Sharpener |
| Refillable water bottle | |



All parents/carers are encouraged to download the MCAS app. With this app parents/carers can access all our communications, report pupil absence, make payments and consent to school trips, update contact details and book onto clubs; as well as view pupil behavior, timetable, school reports etc.

If you aren't yet a MCAS user, please send an email to office@woodfield.bmat.co.uk with the name of your child/ren, and an email with registration information will be sent to you.